

PARTNER FOR DELIVERING EXCELLENCE

www.nmtgindia.com



Since 1975

NMTG MECHTRANS TECHNIQUES PVT. LTD.

An ISO 9001:2015, ISO 14001:2015, ISO 45001:2018 & CE Certified Co

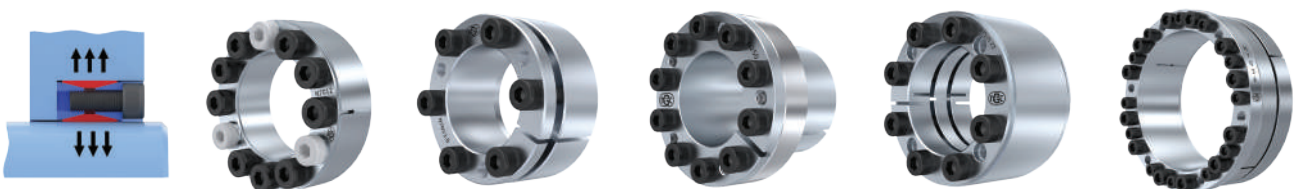
KEYLESS TRANSMISSION ELEMENTS

PORTFOLIO FOR A WIDE RANGE OF APPLICATIONS

NMTG currently offers around 30 types of Keyless Locking Assemblies (Internal Clamping Sets) and three types of shrink Discs (External Clamping Sets). They differ in terms of functionality: some versions are self-centering and others are not. The correct Keyless Transmission Elements can be selected based on the application. Users can also decide whether or not an axial displacement of the hub during assembly is permissible. Based on machine and plant design, units can be selected with regard to dimensions, torque and design safety. NMTG offers solutions for many applications and industries.

Keyless Locking Assemblies (Internal Clamping Devices)							
Series	Shaft Diameter (mm)	Torque Range	No. of Parts	Self-Centering	Not Self-Centering	With Axial Hub Displacement	Without Axial Hub Displacement
N7012	19 - 900	313 Nm-1949 kNm	4		•		•
N7014	45 - 300	3 kNm-257 kNm	4	•			•
N7515 & N7515 ZZ	60 - 640	4.3 kNm-1300 kNm	3	•			•
N7016.1	24 - 600	800 Nm-1760 kNm	3	•			•
N7036	30 - 620	949 Nm-1072 kNm	3	•			•
N7450	25 - 400	974 Nm-953 kNm	3	•			•
N250	6 - 130	17 Nm-25 kNm	3	•			•
N7015.0 & N7015.1	100-800	14 kNm-2427 kNm	5	•			•
N7040, N7041 & N7042	45-400	3.3 kNm-820 kNm	5	•			•
N7035	6-50	6 Nm-1957 Nm	2	•		•	
N8006	6-1000	2.5 Nm-1377 kNm	2		•	•	
N2506	14-65	107 Nm-2122 Nm	2	•		•	
N1600	13-40	21 Nm – 660 Nm	2	•		•	
N7013.1, N7031, N7033, N7033B, N7033C, N7033D, N7134 & N7043	10-500	31 Nm-537 kNm	2	•			•
N7013.0, N7030, N7032 & N7139	18-500	206 Nm-689 kNm	2	•		•	

KEYLESS LOCKING ASSEMBLIES (INTERNAL CLAMPING DEVICES)



ADDITIONAL PRODUCT SOLUTIONS

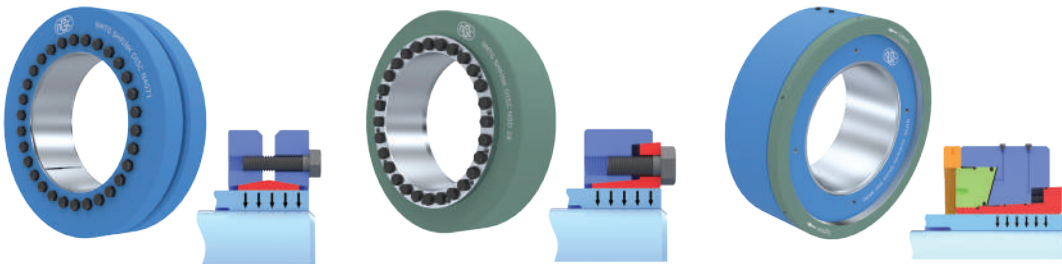
- Keyless Rigid Couplings
- Hydraulic Tensioner Nuts
- Taper Lock Bushes
- Torque Limiters Housing Type
- Torque Limiting Backstops



Scan for more details

Shrink Discs (External Clamping Devices)

Type of Shrink Discs	Series	No. of Parts	Shrink Disc ID / Hollow shaft OD (mm)	Torque Range	Features
Mechanical	N4051	3	125 - 620	10.5 kNm - 1759 kNm	Light Duty Series (10.9 Grade Bolts)
	N4071	3	30 - 620	300 Nm - 2856 kNm	Standard Series (10.9 Grade Bolts)
	N4091	3	50 - 660	1.8 kNm - 4116 kNm	Heavy Duty Series (10.9 Grade Bolts)
	NSD 20	2	24 - 262	20 Nm - 18.3 kNm	Low torques (10.9 Grade Bolts)
	NSD 21	2	140 - 800	16 kNm - 4033 kNm	Average torques (10.9 Grade Bolts)
	NSD 22	2	12 - 1000	20 Nm - 11228 kNm	High torques (10.9 Grade Bolts)
	NSD 23	2	140 - 800	26 kNm - 8952 kNm	Very high torques (10.9 Grade Bolts)
	NSD 28	2	50 - 950	1.5 kNm - 12197 kNm	As series 22 but with 20 - 30 % higher torque capacity (12.9 Grade Bolts)
	NSD 28D	2	30 - 620	330 Nm - 4225 kNm	High torques, Easy, quick assembly by tightening Clamping screws without a torque wrench (12.9 Grade Bolts)
Hydraulic	NHSD 22	4	50 - 800	2.7 kNm - 11872 kNm	High torques Max. 450 Bar Pressure

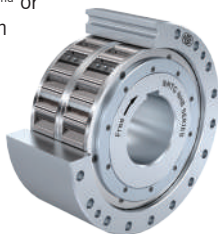


Scan for more details

FREEWHEEL ONE-WAY CLUTCHES & HOLDBACK DEVICES

High Speed Holdback/Backstops

are located on the 2nd or 1st gearbox reduction shaft and prevent reverse motion of conveyor belts, elevators, pumps, blowers.



External Holdbacks / Low Speed Backstops

are located on pulley or head shafts of gearboxes and prevent reverse motion of conveyor belts or bucket elevators.



Overrunning Clutches

Automatic engaging and disengaging of drives.

Indexing Freewheels

For gradual feed of materials.



Housing Type Freewheel clutches

Automatic engaging and disengaging for multi drives for installations with continuous operation.



Sprag Cage Freewheels

For installation between customer-supplied inner and outer rings.



Scan for more details

TENSIONER NUTS & BOLTS

NMTG Tensioner Nuts & Bolts offer you simple and cost-effective tightening solution in bolted joints. This joints can be tightened with high accuracy without requiring heavy tooling.

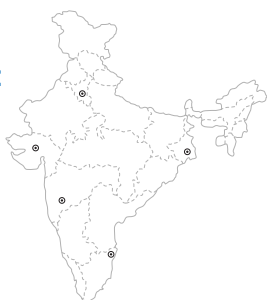
Series	Metric Range	Imperial Range	Style of Tensioner	Temperature Range	Features
TNS	M16 – M160	3/4" – 6"	Standard Tensioner Nut	-40 to 250 °C	Used as a Replacement of Simple Convention Hex Nut
TNY	M16 – M160	3/4" – 6"	Standard Tensioner Nut	-40 to 250 °C	TNY Tensioner Nuts are used as Replacement of Standard Hex Nut, similar to TNS but for Higher Strength.
TNM	M20 – M125	3/4" – 5"	Standard Tensioner Nut	-10 to 350 °C	Replace standard hex nuts at temperatures up to 350°C
TNMT	M24 – M100	1" – 4"	Standard Tensioner Nut	-10 to 350 °C	Replace most castle nuts at 350°C for tight spaces
TB 8	M16 – M160	3/4" – 6"	Standard Tensioner Bolt	-10 to 250 °C	TB 8 tensioner bolts for applications with tapped holes; fit in tight spaces.
TB 12	M20 – M90	3/4" - 3-1/2"	Standard Tensioner Bolt	-10 to 250 °C	Similar to TB 8 tensioner bolt; for high strength.
TNG	M20 – M160	3/4" – 6"	Compact Jamnut	-10 to 250 °C	For applications involving limited headroom or thread engagement.
TNX	M20 – M160	3/4" – 6"	Flexnut	-10 to 250 °C	Reactive nut for through-hole applications, Use in combination with TNS or TB 8.
TNX 12	M20 – M160	3/4" – 6"	Flexnut	-40 to 250 °C	Similar to TNX but use in combination with TNY or TB12 with higher strength.



Scan for more details

NMTG Business Development officer in India

- Head Office: Ahmedabad
- Southern Region: Chennai
- Northern Region: Delhi
- Eastern Region: Kolkata
- Western Region: Pune



NMTG's Global Network along with worldwide customer profile

USA • Brazil • South Africa • Dubai
Russia • Malaysia • Singapore
South Korea



NMTG MECHTRANS TECHNIQUES PVT. LTD.

An ISO 9001:2015, ISO 14001:2015, ISO 45001:2018 & CE Certified Co



A1/A2 GIDC Naroda, Phasel, Near Systronics, Naroda, Ahmedabad, Gujarat-382330, India.



+91 99786 01660 / 079 2282 1527



sales1@nmtgindia.com / sales2@nmtgindia.com / sales3@nmtgindia.com



www.nmtgindia.com



Scan for more details

