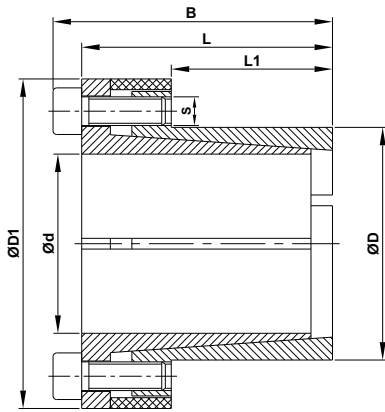


Clamping Element Model N250



- d = Inner diameter
 D = Outer diameter
 B = Overall width with screws
 L = Overall width without screws
 L1 = Width of outer ring
 S = Clamping thread
 M_a = Tightening torque of the screws
 M_t = Transmissible torque
 P' = Surface pressure on shaft
 P = Surface pressure on hub
 P_{ax} = Axial Thrust
 W = Weight

d x D mm	L1 mm	L mm	B mm	D1 mm	Transmissible Torque Nm (M _t)	Axial Thrust KN (P _{ax})	Surface Pressure on		Tightening Screws		Weight Kg (W)
							Shaft N/mm ² P'	Hub N/mm ² P	DIN912 12.9 No. x size(s)x Lb	Tightening Torque Nm (M _a)	
12 x 18	14	26	30	32	58	10	156	104	4 x M4 x 10	5	0.07
13 x 23	14	26	30	38	63	10	144	81	4 x M4 x 10	5	0.11
14 x 23	14	26	30	38	68	10	134	81	4 x M4 x 10	5	0.1
15 x 23	14	30	35	39	120	16	204	133	4 x M5 x 10	10	0.14
15 x 24	16	36	42	44	170	23	251	157	4 x M6 x 18	17	0.22
16 x 24	16	36	42	44	180	23	236	157	4 x M6 x 18	17	0.22
17 x 26	18	38	44	47	190	23	197	129	4 x M6 x 18	17	0.25
18 x 26	18	38	44	47	200	23	186	129	4 x M6 x 18	17	0.24
19 x 27	18	38	44	49	210	23	176	124	4 x M6 x 18	17	0.26
20 x 28	18	38	44	50	220	23	168	120	4 x M6 x 18	17	0.27
22 x 32	25	45	51	54	250	23	110	75	4 x M6 x 18	17	0.34
24 x 34	25	45	51	56	270	23	101	71	4 x M6 x 18	17	0.36
25 x 34	25	45	51	56	280	23	97	71	4 x M6 x 18	17	0.35
28 x 39	25	45	51	61	475	34	129	93	6 x M6 x 18	17	0.48
30 x 41	25	45	51	62	510	34	121	88	6 x M6 x 18	17	0.48
32 x 43	25	45	51	65	720	45	151	112	8 x M6 x 18	17	0.47
35 x 47	30	50	56	69	790	45	115	86	8 x M6 x 18	17	0.58
38 x 50	30	50	56	72	860	45	106	80	8 x M6 x 18	17	0.61
40 x 53	30	50	56	75	900	45	101	76	8 x M6 x 18	17	0.68
42 x 55	32	52	60	78	1750	84	166	127	8 x M8 x 22	41	0.76
45 x 59	40	65	73	85	1890	84	124	94	8 x M8 x 22	41	1.2
48 x 62	45	70	78	87	2010	84	103	80	8 x M8 x 22	41	1.2
50 x 65	45	70	78	92	2600	105	124	95	10 x M8 x 22	41	1.4
55 x 71	50	75	83	98	2850	105	101	79	10 x M8 x 22	41	1.6
60 x 77	50	75	83	104	3150	105	93	72	10 x M8 x 22	41	1.8
65 x 84	50	75	83	111	3400	105	86	66	10 x M8 x 22	41	2.1
70 x 90	60	91	101	119	5800	167	105	82	10 x M10 x 25	83	3
75 x 95	60	91	101	126	6200	167	98	78	10 x M10 x 25	83	3
80 x 100	65	96	106	131	8000	200	102	82	12 x M10 x 25	83	3.5
85 x 106	65	96	106	137	8500	200	96	77	12 x M10 x 25	83	3.6
90 x 112	65	96	106	144	11250	250	113	91	15 x M10 x 25	83	3.9
95 x 120	65	96	106	149	11850	250	107	85	15 x M10 x 25	83	4.4
100 x 125	65	96	106	154	15000	300	123	98	18 x M10 x 25	83	4.6
110 x 140	90	128	140	180	16000	291	78	61	12 x M12 x 30	145	8.7
120 x 155	90	128	140	198	17500	291	72	55	12 x M12 x 30	145	10.6
130 x 165	90	128	140	208	25000	389	88	69	16 x M12 x 30	145	11.3