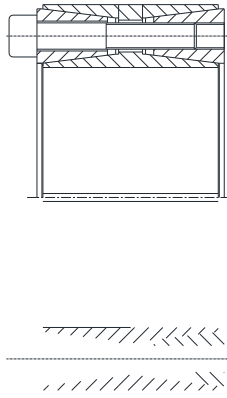


# Locking Assembly Model N 7015.1



- d =Inner diameter
- D =Outer diameter
- L1 =Overall width with screws
- L =Overall width without screws
- I =Clamping length
- S =Clamping thread
- Ma =Tightening torque of the screws
- Mt =Transmissible torque at given Ma
- P' =Surface pressure on shaft at given Ma
- P =Surface pressure on hub at given Ma
- Pax =Axial Thrust
- W =Weight

d x D mm	I mm	L mm	L1 mm	Transmissible Torque Nm (Mt)	Axial Thrust KN (Pax)	Surface Pressure on		Tightening Screws DIN912 12.9 No. x size(s) x Lb	Tightening Torque Nm (Ma)	Nos. of releasing Threads	Weight Kg (W)
						Shaft N/mm2 P'	Hub N/mm2 P				
100 x 145	60	65	75	6575	132	91	63	9 x M10 x 55	83	2 x 3	4.1
110 x 155	60	65	75	8037	146	92	65	10 x M10 x 55	83	2 x 4	4.4
120 x 165	60	65	75	10521	175	101	74	12 x M10 x 55	83	2 x 4	4.8
130 x 180	68	74	84	14247	219	101	73	15 x M10 x 60	83	2 x 5	6.5
140 x 190	68	74	84	15343	219	94	69	15 x M10 x 60	83	2 x 5	7
150 x 200	68	74	84	17534	234	94	70	16 x M10 x 60	83	2 x 4	7.4
160 x 210	68	74	84	21041	263	99	75	18 x M10 x 60	83	2 x 6	7.8
170 x 225	75	81	93	27352	322	105	80	15 x M12 x 65	145	2 x 5	10
180 x 235	75	81	93	30892	343	106	81	16 x M12 x 65	145	2 x 4	10.6
190 x 250	88	94	106	36684	386	96	73	18 x M12 x 75	145	2 x 6	14.3
200 x 260	88	94	106	42906	429	101	78	20 x M12 x 75	145	2 x 5	15
220 x 285	98	104	116	49556	451	89	69	21 x M12 x 80	145	2 x 7	19.8
240 x 305	98	104	116	61784	515	93	73	24 x M12 x 80	145	2 x 8	21.4
260 x 325	98	104	116	75300	579	97	77	27 x M12 x 80	145	2 x 9	23
280 x 355	120	126	140	115034	822	106	84	28 x M14 x 100	230	2 x 7	35.2
300 x 375	120	126	140	123250	822	99	80	28 x M14 x 100	230	2 x 7	37.4
320 x 405	135	142	158	179962	1125	110	87	28 x M16 x 110	355	2 x 7	51.3
340 x 425	135	142	158	191209	1125	103	83	28 x M16 x 110	355	2 x 7	54.1
360 x 455	158	165	183	209622	1165	84	67	24 x M18 x 140	485	2 x 8	75.4
380 x 475	158	165	183	248927	1310	90	72	27 x M18 x 140	485	2 x 9	79
400 x 495	158	165	183	310552	1553	101	82	32 x M18 x 140	485	2 x 8	82.8
420 x 515	158	165	183	326079	1553	96	78	32 x M18 x 140	485	2 x 8	86.5
440 x 545	172	180	200	372775	1694	91	74	27 x M20 x 140	690	2 x 9	110
460 x 565	172	180	200	389719	1694	87	71	27 x M20 x 140	690	2 x 9	114
480 x 585	172	180	200	451848	1883	93	76	30 x M20 x 140	690	2 x 10	119